

**BAKER BOTTS** LLP

THE WARNER	AUSTIN
1299 PENNSYLVANIA AVE., NW	BEIJING
WASHINGTON, D.C.	DALLAS
20004-2400	DUBAI
	HONG KONG
TEL +1 202.639.7700	HOUSTON
FAX +1 202.639.7890	LONDON
www.bakerbotts.com	MOSCOW
	NEW YORK
	RIYADH
	<b>WASHINGTON</b>

April 2, 2008

Terry Romine  
Executive Secretary  
Maryland Public Service Commission  
6 St. Paul Street  
Baltimore, MD 21202

Nadine Moustafa  
TEL +1 (202) 639-7701  
FAX +1 (202) 585-4070  
nadine.moustafa@bakerbotts.com

**Re: Case No. 8938 -- Criterion Power Partners, LLC  
Application for PSC Approval to Construct a Windpower  
Generating Station Pursuant to PUC Article Section 7-207.1**

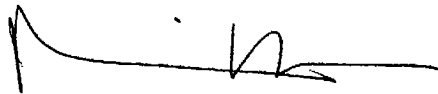
Dear Secretary Romine:

Criterion Power Partners, LLC ("Criterion") hereby provides, as an informational filing, an additional map showing the estimated location of the turbines for the proposed wind energy facility in Garrett County. Criterion previously provided a map with its January 24, 2008 CPCN exemption application and distributed and displayed a second map at the March 6, 2008 public meeting. The second map was then filed with the Commission on March 17, 2008. Although it is Criterion's position that the CPCN exemption application was complete when filed, and that this public information map filing is not a material change to the application, Criterion is providing this additional map due to public interest in the project.

The estimated locations of the turbines are indicated as circles on the attached map. Ongoing consultations with other state and local governmental agencies may result in minor adjustments to those locations. The map distributed and displayed at the March 6 meeting and filed on March 17 shows the outlined areas where turbines could be sited.

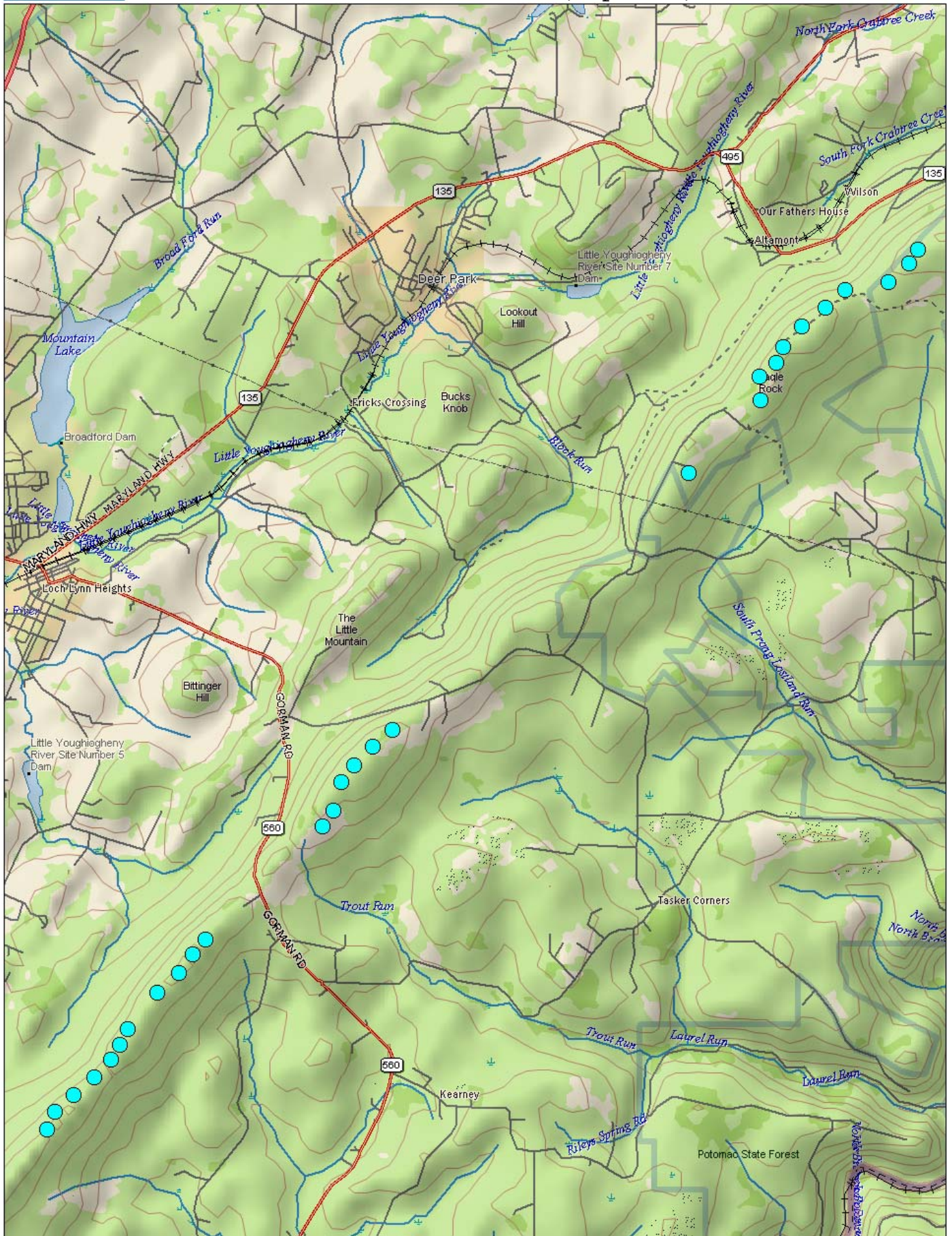
If you have any questions, please contact the undersigned at (202) 639-7701, or Kyle Paulson at (703) 578-0036.

Sincerely,



Nadine Moustafa

cc: All Parties to Case No. 8938



Data use subject to license.

© DeLorme. XMap® 5.0 Professional.

www.delorme.com



Data Zoom 11-7